

Press Release

Stuttgart/Germany August 9, 2022

MAHLE and Siemens sign a declaration of intent for wireless charging

- Joint systems development in infrastructure and automotive engineering
- The aim is to achieve standardization in inductive charging systems

MAHLE, the technology group, and Siemens have signed a declaration of intent for cooperation in the area of wireless charging systems for electric vehicles. In the future, both companies will jointly develop and test complete infrastructure and automotive engineering systems. One of the areas of focus will be on promoting technological standards for inductive charging technology.

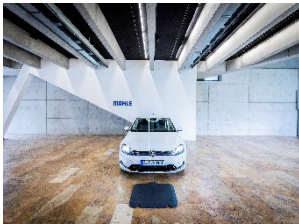
“We are very pleased to have found a strong partner in Siemens in order to make major advances in inductive charging. The combined experience of both companies gives us a clear competitive advantage,” said Dr. Harald Straky, Vice President for Global Development at MAHLE in the area of mechatronics and electronics.

“Wireless charging of electric vehicles is emerging as a major market for the future. In addition to making life considerably easier for drivers, who no longer have to fiddle with cables and connectors, it is a crucial requirement for the autonomous mobility of tomorrow. The transfer efficiency of wireless, inductive charging is comparable to plug-in systems,” said Dr. Stefan Perras, Head of Predevelopment and Innovation for charging infrastructure at Siemens AG.

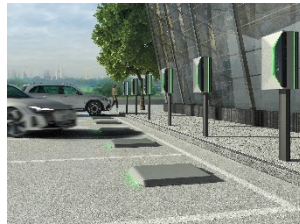
MAHLE has reinforced its development activities in the field of wireless charging in recent years. This includes two projects funded by the German Federal Ministry for Economic Affairs and Climate Action (BMWK): One project aims to develop a cross-manufacturer inductive charging system for vehicles. In the second project, a standardized measurement method for the electromagnetic compatibility of inductive systems is being developed.

The technology group is already on the market with its cable-based infrastructure solution: chargeBIG. This intelligent charging management

system can be integrated into existing infrastructure at low cost and without lengthy conversions. The system is aimed at areas where electric cars are parked for extended periods of time—for example in company car parks, at airports or in the underground parking ramps of large residential complexes.



Source – MAHLE
MAHLE and Siemens will jointly work on wireless charging.



Source – Siemens
MAHLE and Siemens aim to achieve standardization in inductive charging systems.

Contact persons for MAHLE communications:

Ingo Schnaitmann

Head of Media Relations

Phone: +49 711 501-13185

E-mail: ingo.schnaitmann@mahle.com

Christopher Rimmele

Spokesperson

Phone: +49 711 501-12374

E-mail: christopher.rimmele@mahle.com

About MAHLE

MAHLE is a leading international development partner and supplier to the automotive industry with customers, in the passenger car and commercial vehicle sectors. The technology group, which was founded in 1920, is working on the climate-neutral mobility of tomorrow with a focus on the strategic fields of electromobility and thermal management as well as other technology fields to reduce CO₂ emissions, for example fuel cells or highly efficient combustion engines that run on e-fuels or hydrogen. Currently the share of its sales earned independently from the internal combustion engine for passenger cars amounts to more than 60 percent and is to increase to 75 per cent by 2030. Half of all the vehicles in the world now contain MAHLE components.

In 2021, MAHLE generated sales of EUR 10.9 billion and is represented in over 30 countries with more than 71,000 employees in 160 production locations and 12 major research and development centers. (Last revised: 2021-12-31)

#weshapefuturemobility